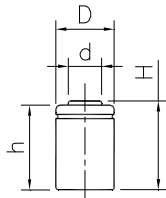


MODEL No: J-2/5AA400

Description: 400 mAh SIZE NI-MH AA



Dimensions(without Tube) (mm)

| | |
|---|------------|
| D | 13.90±0.10 |
| d | 8.10±0.08 |
| H | 21.00±0.50 |
| h | 20.50±0.50 |

Specification

| | | | |
|--|-----------|----------|------------|
| Nominal Capacity | | 400 mAh | |
| Nominal Voltage | | 1.2 V | |
| Charge current | Standard | 40 mA | |
| | Fast | 400 mA | |
| Charge time | Standard | 16 Hrs | |
| | Fast | 1.2 Hrs | |
| Ambient Temperature | Charge | Standard | 0°C~45°C |
| | | Fast | 10°C~45°C |
| | Discharge | | -20°C~60°C |
| | Storage | | -20°C~55°C |
| Internal Impedance(mΩ) (After Charge) | | ≤ 45 | |
| Weight | | 9.5 g | |

