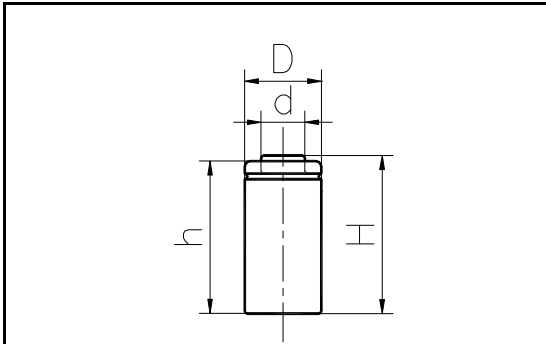


MODEL No: J-2/3AA600

Description: 600 mAh SIZE NI-MH AA



Dimensions(without Tube) (mm)

D	13.90±0.10
d	8.10±0.08
H	28.10±0.50
h	27.50±0.50

Specification

Nominal Capacity		600 mAh
Nominal Voltage		1.2 V
Charge current	Standard	60 mA
	Fast	600 mA
Charge time	Standard	16 Hrs
	Fast	1.2 Hrs
Ambient Temperature	Charge	Standard 0°C~45°C Fast 10°C~45°C
	Discharge	-20°C~60°C
	Storage	-20°C~55°C
Internal Impedance(mΩ) (After Charge)		≤ 35
Weight		13.0 g

