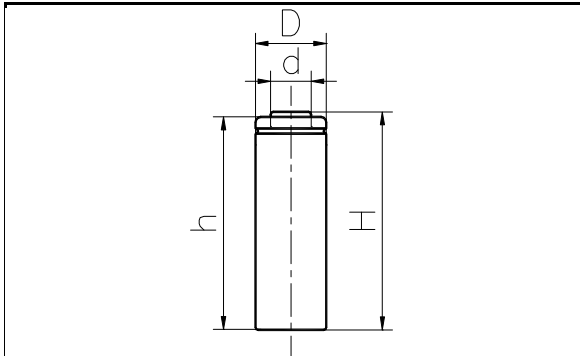


MODEL No: 4/5A1100

Description: 1100 mAh SIZE NI-Cd A



Dimensions(without Tube) (mm)

D	16.60±0.10
d	7.00±0.08
H	42.10±0.50
h	41.60±0.50

Specification

Nominal Capacity		1100 mAh	
Nominal Voltage		1.2 V	
Charge current	Standard	110 mA	
	Fast	1100 mA	
Charge time	Standard	16 Hrs	
	Fast	1.2 Hrs	
Ambient Temperature	Charge	Standard	0°C~45°C
		Fast	10°C~45°C
	Discharge		-30°C~60°C
Storage		-20°C~60°C	
Internal Impedance(mΩ) (After Charge)		≤ 26	
Weight		25.5 g	

