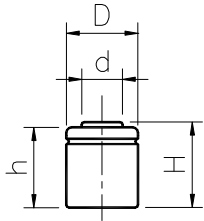


MODEL No: 1/3AA170

Description: 170 mAh SIZE NI-Cd AA



Dimensions(without Tube) (mm)

| | |
|---|------------|
| D | 13.90±0.10 |
| d | 8.10±0.08 |
| H | 16.30±0.50 |
| h | 16.00±0.50 |

Specification

| | | | |
|--|-----------|------------|------------|
| Nominal Capacity | | 170 mAh | |
| Nominal Voltage | | 1.2 V | |
| Charge current | Standard | 17 mA | |
| | Fast | 170 mA | |
| Charge time | Standard | 16 Hrs | |
| | Fast | 1.2 Hrs | |
| Ambient Temperature | Charge | Standard | 0°C~45°C |
| | | Fast | 10°C~45°C |
| | Discharge | | -30°C~60°C |
| Storage | | -20°C~60°C | |
| Internal Impedance(mΩ) (After Charge) | | ≤ 60 | |
| Weight | | 6.7 g | |

