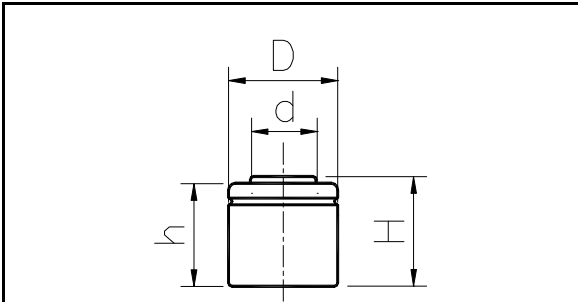


MODEL No: 1/3A250

Description: 250 mAh SIZE NI-Cd A



Dimensions(without Tube) (mm)

D	16.60±0.10
d	7.00±0.08
H	16.30±0.50
h	15.80±0.50

Specification

Nominal Capacity		250 mAh
Nominal Voltage		1.2 V
Charge current	Standard	25 mA
	Fast	250 mA
Charge time	Standard	16 Hrs
	Fast	1.2 Hrs
Ambient Temperature	Charge	Standard 0°C~45°C
		Fast 10°C~45°C
	Discharge	-30°C~60°C
Storage		-20°C~60°C
Internal Impedance(mΩ) (After Charge)		≤ 45
Weight		8.7 g

